

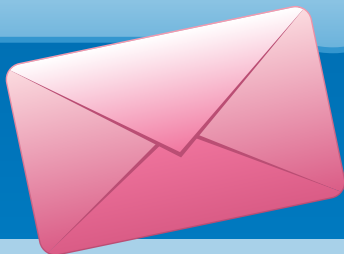
# SPREAD THE JOY

## Be a part of the PA PEN PAL PROJECT



**FOR ALL  
STUDENTS  
grades pre-K to 12**

**Now through  
DEC. 25, 2020**



As the holidays near, many residents in long-term care facilities continue to be isolated due to the COVID-19 pandemic. Help us spread some joy this season with the PA Pen Pal Project. An initiative of PAIU, the PA Pen Pal Project is a voluntary outreach effort in which students write letters, draw pictures and provide some positivity to patients in long-term care facilities who are separated from their friends and family.

### FAQs

#### **To whom should students address their letters and/or drawings?**

Both general and personalized cards can be sent. [Click here](#) to locate long-term care facilities in Allegheny County.

#### **Is there anything in particular they should include in their letters?**

We would recommend any comforting words that reflect kindness and encouragement during this difficult time. In some areas, residents have expressed that they feel like they are incarcerated with limited contact to family and friends.

#### **Should cards be hard copies or digital?**

Either is fine. The only caution is that not all facilities will have the technology necessary to share, print out, etc. the letters and pictures.

Messages from child care centers, PreK, Head Start, center programs and K-12 students in Allegheny County are all encouraged.

[Click here](#) for a resource to locate long-term care facilities near your district.

**#WRITE NOW  
Your Words Matter!**



**PAIU**  
PENNSYLVANIA ASSOCIATION  
OF INTERMEDIATE UNITS